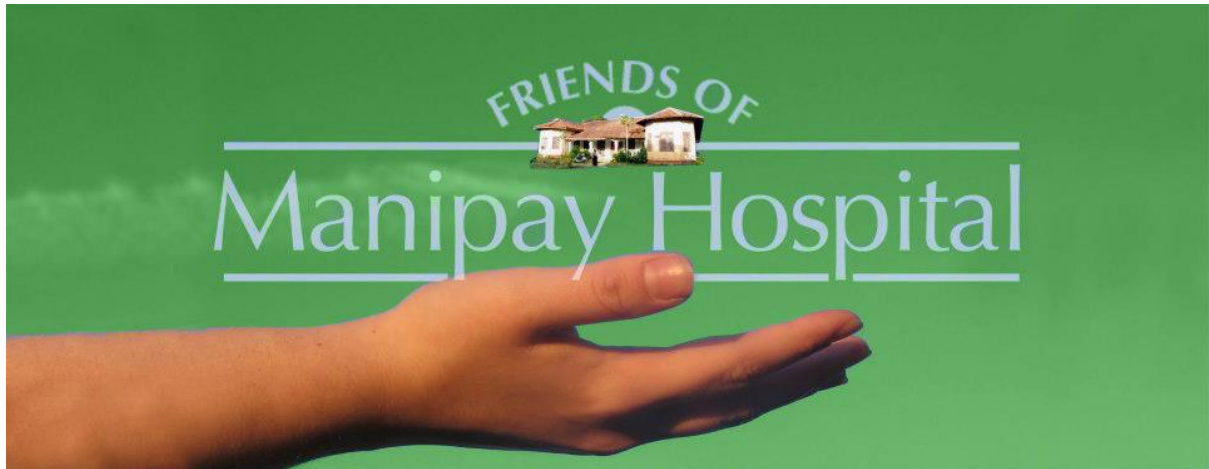


## Green Memorial Hospital and Friends of Manipay Hospital

Annual Report 1 st August 2024



*“ The Green Memorial Hospital in Manipay - Sri Lanka was founded by a visionary -Dr Samuel Green from the United States of America and Thank You for being a participant in its restoration”*

Green Memorial Hospital ( GMH ) is governed by a Governing Council which was formed on 26<sup>th</sup> December 2022. GMH is a not-for-profit hospital and with the legacy of being the hospital which was the First Medical School in Ceylon ( Sri Lanka ) from 1847 to 1874.

Friends of Manipay Hospital (FOMH ) was authorised by ‘ **The American Ceylon Mission** ’ which owns Green Memorial Hospital to revive and restore Green Memorial Hospital in 2005. FOMH is a Registered UK charity ( Registration number 1113439 ) overseen by the charity Commission of the Government of UK which registers and regulates charities.

FOMH established the Institute of Medical Sciences Trust ( IMS ) at Green Memorial Hospital in 2012 as the local delivery partner for FOMH.

Ride4Ceylon was founded in 2018 by Friends of Manipay Hospital and is registered with the Intellectual Property Office in UK as a fund raising brand for FOMH.

## *Our Clinical Services*

### **1. Hope Beyond Cancer ( HBC ) Project at Green Memorial Hospital ( GMH ): for anyone worried about Cancer or affected by Cancer**

GMH is a warm and a welcoming place to people who think the end has come, whereas GMH can make it just the beginning of a new lease of life with a supportive Medical, Nursing and Donor community which is world wide.

GMH has often been described by visitors as an oasis with majestic classic buildings and surrounding campus and as calm and serene place.

The following photos are of plants at GMH and the sunset is seen from the balcony of Centenary Block.

GMH really has a serene locality with a beautiful atmosphere. The family of late Joel Arnold has donated funds to create a Peace Garden in his memory in front of Roger's Home to add to the beauty of the surroundings.





Roger's Home (RH) at GMH which was once a Maternity Home has already been transformed into an in-patient Medical facility with 5 rooms for Cancer Care and 7 rooms for General Medical care spending approximately SLR 12 million rupees. These rooms will be used flexibly depending on the number of patients needing cancer and/or general medical care to be efficient with room occupancy. Cancer patients will always be given priority.

GMH is currently in the process of renovating the Centenary Block (CB ) spending large amounts of funds donated by several donors including ride4ceylon donors. Estimated renovation cost is about SLR 20 million rupees and it will be completed in late September.

In the first floor of CB there are two Surgical Operating Theatres in which minor cancer Surgery as well as general surgical operations will be carried out. ( GMH needs further

funding for a new anaesthetic machine and surgical equipment; until then only minor surgeries will be performed at GMH under Local Anaesthesia).

We will also have 8 patient care rooms in the first floor of CB and they will have post surgical, medical and cancer patients.

In the ground floor of Centenary Block ( CB ) Diagnostics including the Ultrasound Scanning facility and the digital X-ray unit and Consultant Channelling service will be made available for patients suspected to have cancers of different body organs and also for general medical conditions.

Previously, the ground floor of CB had the Out Patient Department (OPD ) (this has now moved to Sellamuttu Block-SB ) and some general medical in patients ( this has now moved to Roger's Home).

Centenary Block ground floor will ultimately emerge as a diagnostic centre for cancer as well as for non-cancer patients.

Friends of Manipay Hospital UK registered charity has received many kind donations from donors including from riders of Ride4Ceylon ( R4C) that has enabled this transformation to take place at GMH .

Our sincere thanks go to Ride for Ceylon who raised large sums funds, amounting to GBP 100,000.00 for the brand new state of the art Digital Xray machine plus the top class Ultrasound scanner.

The first donor for the Cancer programme at GMH Mr Stanmore Anandarajah from R4C needs special mention with gratitude.

Dr G Sritharan a leading Oncology Surgeon at Jaffna Teaching Hospital is heading up the team currently consisting of Fellow Consultant Surgeons Dr S Mathivaanan and Dr Vaheesan ; and Physicians including Dr Keetheswaran Dr Felicia, and Dr Premakrishna an Anaesthetist and pain consultant as well as about 10 junior Doctors and several Nurses in providing this service.

Dr Sritharan has trained 10 Nursing students doing Nurse training at GMH for the HBC project. Dr Sritharan joined GMH as a Visiting Oncology Consultant in December 2023.

Physiotherapy, nutritional support using Nasogastric tube feeding, specialised pain management techniques guided by a pain consultant is also available at GMH.

Opportunistic cancer screening and bringing cancer awareness to people who attend GMH OPD is part of the HBC project being organised by Dr Sridharan.

Data analysis to inform future provision is being undertaken.

Furthermore, a monthly community outreach service for cancer screening is in place. This community engagement is designed to inform people about the HBC support offer from GMH. It also raises awareness about the signs and symptoms of different types of cancer as well as preventative measures.

The Patient Transport Vehicle donated by Ride4Ceylon is very helpful for this programme.

Jameson Block is the focal point currently where Dr Sritharan provides consultations as part of the HBC service and the focal point will move to the Centenary Block once repairs are completed to Centenary Block for this purpose by the middle of October this year.

**HBC** will support people through their cancer journey and beyond from diagnosis through treatment and further care in all three blocks ( Roger's Home, Centenary Block and. SB)

The Complex parts of this Cancer journey will be provided at Jaffna Teaching Hospital.

This brings to fruition our initial thoughts on 'Hope Therapy' for Cancer patients as envisaged in late 2018.

In the beginning our plan was to renovate Medical Superintendent's (MS ) quarters and have a day care unit and a 4 bedded cancer ward. At that point GMH didn't have any consultant support for cancer and Junior doctor support to run a 24 hour in-patient service.

Moreover the requisitioning of MS quarters by Government Authorities during the Covid period for their Quarantine Purpose made it impossible to use that building for cancer patients. This block was released back to the hospital only a few months ago.

GMH had to reconfigure the HBC services because of these reasons and we are pleased that the current plans are more robust and comprehensive.

After the appointment of our New JDCSI Bishop V Pathmathayalan in December 2022 a new Governing Council was formed and the Institute of Medical Sciences (the local Delivery partner of FOMH ) has been given contracts by GMH as the sole clinical and academic services provider for GMH for three more blocks within the GMH premises and the newly formed GMH Governing Council ( GMHGC )has been able to spread out the various aspects of Hope Beyond cancer services in RH, CB and SB under the Guidance of the Consultant Cancer Specialist Dr Sritharan.



The patient transport vehicle was donated by ride4ceylon.

Roger's Home and Centenary Block ,the way they were before and after repairs





Rogers Home After refurbishment



Centenary Block



**Jameson Block**



Jameson Block



## **2. Neuro rehabilitation service for adults in the ground floor of Jameson Block.**

- A)** This Block has 18 rooms for Neuro rehabilitation and is in constant demand as the only such service in the Northern Province.

## **3. Paediatrics at GMH**

- A.** Neurodevelopmental Paediatrics is delivered from former Doctor's Quarters free of charge . 30 children are seen daily in this clinic to assess and support Neuro development for Autistic spectrum disorders.
- B.** General Paediatrics- Consultant Channelling by Dr Saravanapavan is provided at Sellamuttu Block and OPD Paediatrics is also provided in Sellamuttu Block. Around 10 children are seen daily.



- C.** Children with general paediatric conditions are seen and treated by OPD doctors in Sellamuttu Block.
- D.** General Paediatrics as part of Family Medicine is provided by Dr Kumaran in Admin Block.



A photograph of the building ( Previous known as Doctors Quarters) which was recently renovated to provide the Paediatric Neuro service is shown below.



## **Medical care for our children at GMH with neurodivergence**

Firstly, some background information on neuro divergence for the donors to have some basic knowledge in this subject is given below.

Among the South Asian countries, Sri Lanka has shown 1 in 93 children to be affected by Neurodivergence. According to Sri Lankan literature; among those identified of 10.6% of special needs school age children; only 0.4% attend schools or special education units. The evidence has highlighted that implementing evidence-based intervention such as play therapy with clinical reviews and culturally sensitive periodical assessment approaches at a hospital service level facilitates the post diagnostic management of neurodivergence.

Several clinical entities come under the spectrum of Neurodivergence.

One common cause of neuro divergence is Autistic Spectrum disorder

Autism spectrum disorder (ASD) is a neurological and developmental disorder that affects how people interact with others, communicate, learn, and behave. Although autism can be diagnosed at any age, it is described as a “developmental disorder” because symptoms generally appear in the first 2 years of life.

Autism is known as a “spectrum” disorder (ASD) because there is wide variation in the type and severity symptoms people experience.

Social communication / interaction behaviours may include:

- Making little or inconsistent eye contact
- Appearing not to look at or listen to people who are talking
- Infrequently sharing interest, emotion, or enjoyment of objects or activities (including infrequent pointing at or showing things to others)
- Not responding or being slow to respond to one’s name or to other verbal bids for attention
- Having difficulties with the back and forth of conversation
- Often talking at length about a favourite subject without noticing that others are not interested or without giving others a chance to respond
- Displaying facial expressions, movements, and gestures that do not match what is being said
- Having an unusual tone of voice that may sound sing-song or flat and robot-like
- Having trouble understanding other people’s actions or questions
- Difficulties adjusting behaviours to social situations
- Difficulties sharing in imaginative play or in making friends

Restrictive / repetitive behaviours may include:

- Repeating certain behaviours or having unusual behaviours, such as repeating words or phrases (a behaviour called echolalia)
- Having a lasting intense interest in specific topics, such as numbers, details, or facts
- Showing overly focused interests, such as with moving objects or parts of objects
- Becoming upset by slight changes in a routine and having difficulty with transitions
- Being more sensitive or less sensitive than other people to sensory input, such as light, sound, clothing, or temperature

Children with ASD may also experience sleep problems and irritability.

Children on the autism spectrum also may have many strengths, including:

- Being able to learn things in detail and remember information for long periods of time
- Being strong visual and auditory learners
- Excelling in math, science, music, or art



## **What are the assessments and interventions do these children need?**

- Medical and neurological examinations for physical abilities
- Assessment of the child's cognitive abilities
- Assessment of the child's language abilities
- Observation of the child's behaviour
- An in-depth conversation with the child's parents and care-givers about the child's behaviour and development
- Assessment of age-appropriate skills needed to complete daily activities independently, such as eating, dressing, and toileting

Because ASD is a complex disorder that sometimes occurs with other illnesses, the comprehensive evaluation will include:

- Blood tests
- Hearing tests
- Some of the strengths of our children include better memory in some specific areas ,
- 
- being able to mentally picture three-dimensional (3D) objects easily, the ability to
- to solve complex mathematical calculations in their head, and many more.
- Genetics ( eg Down's syndrome ), Trauma at birth, Infectious diseases, Immune disorders, Nutritional factors and Physical trauma all contribute to their neuro divergence
- They need appropriate support to the family for the child's underlying root cause of Neurodivergence.
- They need monitoring for progression in hormonal maturity, Bone maturity, Cardiac conditions, Gastro oesophageal reflux conditions, colon conditions, speech conditions and hearing impediments apart from the fundamental evidence of Neuronal development

## **What are we doing in our unit at GMH**

The program provides healthcare services to children with neuro development delay and their parents at no cost. It operates from Monday to Saturday 3 pm to 5.30 pm, for individual skills development and socialization activities.

Dr Kumaran sees all new admissions in the clinic (twice a week ) and confirms the diagnosis and quantify and qualify their needs. New patients are assessed by experts in the speciality such as Paediatric psychologists

and neurologists before they come to our unit. When they come to our unit Dr Kumaran makes comprehensive assessment of all new admissions in the clinic and confirms the diagnosis and quantify and qualify their needs and gives guidance to initiate treatment. . He also has consultations with the parents of all existing children in our unit regularly with and without the children on a regular rotational basis to assess their progress . Minimum of four sets of parents every week. He looks into their other general medical needs such as Asthma, Epilepsy, and congenital cardiac issues that coexist in these children.

Ms Yalini Shan ( trained in children's nutrition and neuro-development and admin and management ) conveys the assessment and feedback from Dr Kumaran to the Therapists.

Yalini supervises the coaching assistants on a daily basis to ensure that necessary duties are carried out. She assesses the nutritional status of all children and show parents how to prepare appropriate food for the individual child and supports them to enjoy consuming it. They make nutritious food in the premises to feed the children and teach the parents various techniques to make these children eat the food. They make notes on each child on a regular basis. Each child has a note book with their entire medical and developmental history.

Yalini organises the work rota and leave for therapists and organises special events and manages the overall admin of the place.

Ms Satsorubi ( a trained nurse practitioner trained in the management of children with Neuro divergence) assesses their cognition, language ability, and physical disability and supervises the work of therapists and gives them feedback on their performance and improves their communication skills. She liaises with physiotherapists and Dr Kumaran as and when needed.

A dental therapist visits to improve the dental health of all children to treat problems and promote prevention.

Hearing tests are organised for all children and appropriate care given.

A music teacher with special expertise helps them to learn various instruments to have co-ordinated performances. We are planning to fund the purchase of more musical instruments to learn coordinated musical performances. Coaching assistants engage the children in music and dancing regularly.

There are 10 Coaching Assistants, and they were trained by Dr Kumaran initially in this complex area of paediatrics and ongoing supervision and support given by Yalini and Satsorubi. They are sent for work-shops and classes in this speciality every time such training happens in the Faculty of Medicine Jaffna.

There are several spacious rooms in the new unit and they are allocated for different aspects of treatment. The team at our unit have put in a lot of time and effort to equip these rooms according to latest international guidance to improve specific needs of neurodivergence.

Dr Kumaran supported some of the Coaching Assistants to learn to play the keyboard themselves for them to teach the children. One child gave a very good performance on the key board when the JDCSI Bishop visited the unit recently.

Therapists also visit the children when they are in their schools to make further assessments and take measures to improve their academic performance when they are with them in the unit.

Two children passed the 10+ National Scholarship exam last year. Mr Sayaruban ( IMS Treasurer ), Matron Nirmala and other GMH staff visited the unit and gave awards to them and motivated the children.

If the children have falls and sustain injuries in the unit or at home, or come to the unit with infections or any other issues they are sent to the OPD Block to get treated and are followed up by Dr Jacobson or any other doctor on duty in our Urgent care Centre.

Coaching assistants have voluntarily cleared up an area behind the unit by themselves to start a learning garden which will be therapeutic to these children.

The children have made great progress, and the parents have total confidence in the team and give excellent feedback. The feedback has been so good and the unit has attracted children from developed countries like UK, Canada and Denmark to come and receive therapy in the unit. We have 5 such students currently and they have stayed with us from 3 months to 2 years.

There is continuous monitoring of the activities of the unit and progress in outcomes with regular communication within the entire team and monthly meetings to make more decisions.

Doctors Quarters block is ideally suited for the neuro paediatric service, being tucked away from the main road with kitchen facilities to prepare food for the children and to have more play areas and a learning garden as part of their therapy.

#### **4. Surgery at GMH :**

##### **There are 2 operating theatres in the first floor of CB**

Four Consultant Surgeons consult at GMH ( Dr Manthivaanan, Dr Sritharan, Dr Giritharan and Dr Vaheesan ). The Operating Theatre has been redone but a new

Anaesthetic Machine and various surgical equipment will have to be bought, the entire CB block repairs be completed by October and a senior sister with theatre experience will be employed before Operations are performed. We are planning to start minor surgeries under Local Anaesthesia after October to begin with.

Operating theatre at GMH



## **5 Elders Home :**

An elders Home called “Arul Manai ” is being established in the former Manipay Boys home opposite the hospital on Uduvil Road.



## **6. IMS Academy :**

This is situated in the first floor of Jameson Block.

This is flourishing with several paramedical courses (recognised by the Sri Lankan Government ) with over 100 students and 300 who have completed training since 2012. The programme is funded by Manithaneyam Trust UK and Sathiyarupa Charitable Trust USA .

Manithaneyam Trust UK gave the start up funding for the Healthcare Assistant Training Programme in 2013 and has continued with annual funding support.

Dr Mary MacCallum Scott at the start of the 20<sup>th</sup> century came over from Canada and started a Nursing School known as Willis Pierce Nursing School and trained up a great number of women as Nurses. IMS has renewed that

legacy. Dr Scott was the first female doctor to practice medicine in Ceylon.

Dr Coonghe Senior lecturer in Public Health, Medical Faculty, University of Jaffna and Renuka Surendrakumaran , the Admin officer have been spearheading this hugely successful service .





**Medical Superintendent's Quarters** : This is in a bad state of disrepair and funds of around rs 10 Million will be raised to put this building to good use within the hospital.

**Digital Xray** : A state of the art Digital Xray machine funded by Ride4Ceylon in 2023 is available at GMH in CB. Currently around 10 patients a month have Xrays done at GMH.



**This digital Xray Room is based in Centenary Block at GMH.**



**Physiotherapy** : An active Physiotherapy programme is offered in the Physiotherapy Block.



**Accommodation** : Staff accommodation is provided in the Nurses' Quarters refurbished by fund raising from ridersforcharity sponsored cycle-ride in 2018.

**GMH Ambassadors** : Mrs Jean Shanthi DeSilva, Mr Naren Bartlett and Dr TG Prithviraj ( CEO of Humedica International Lanka ) have been appointed as GMH Ambassadors in Colombo. We thank them for the wonderful support given voluntarily.

**Statistics:** GMH in offering 24/7 Urgent care and the Out patients Department sees 10,000 patients year who visit without appointment by a pool of 11 middle grade level doctors ( Dr Gunabavan, Dr Kajithan,Dr Jacobson, Dr Rohan, Dr ,Mahendan, Drsasikumar,DR Dean Jenifert, Dr Narmtha,DR Jerom Logathan, Dr Vimalkanth and Dr Vimalini )and a Consultant Paediatrician ( Dr Sarvanapavan ) who also work at Jaffna Teaching Hospital. GMH has on average 30 in-patients in the wards most days.

## **We wish to say – Thank you**

The patients and communities that GMH serves benefit greatly from the generosity of all of you donors. The Waterloo Foundation has been a strong financial supporter over many years and we thank TWF for the generous donations.

Two of the Ride4ceylon Sri Lanka Directors Mr Sriomal DeSilva and Mr Nishantha Abeyawardene have participated with great passion and energy in the drive for rideforceylon-FOMH fund raising for GMH. They are ably assisted by Mr Noel Joseph.

From 2018 when FOMH founded RideforCeylon ( R4C ), one of the volunteer co-leaders of FOMH's R4C committee for the cycle-ride based fund raising was Mr David Rasiah. He worked hard to carry out this formidable task, to make the FOMH brand a hugely successful raising funds for GMH, until for work reasons he stepped down last month as FOMH proxy for matters in Sri Lanka and UK but he remains as a Director of Ride4ceylon Sri Lanka.

We would like to thank Prof Nadarajah Sreeharan for the steadfast support to IMS.

We also wish to thank Benevity the Canadian charity support company for accepting Friends of Manipay Hospital after undertaking due diligence as a worthy charity for 'giving and matching' the system that has enabled Macquarie Group to match donations to FOMH charity.

We are hugely thankful to Macquarie Group which through their matched funding programme gave us funds to repair and put to clinical use Arul Manai as a not-for-profit Elders Home.

It was a stunning and defining moment in the revival programme of GMH when the American Ambassador Ms Julie Chung made time to visit Green Hospital on the 15<sup>th</sup> of May 2024.



We were equally stunned and happy when His excellency Mr Eric Walsh Ambassador for Canada visited the hospital on 7<sup>th</sup> June 2024. The euphoria of the moment was clearly palpable amongst staff and well wishers around the world.



### **Breaking news**

We have been informed by Bishop Pathmathayalan, Chairman of GMH Governing Council that the Ultrasound scanner that was installed at Green Memorial Hospital from the funds raised by Ride4Ceylon 2024 cycle ride at a cost SLR 12 million was inaugurated by him with a blessing on the 27<sup>th</sup> of July.

Immense thanks are due to all rider donors and donors. The scanner is state of the art Canon Xario 100G with Abdominal transducer, Endovaginal and rectal transducer for Gynaecology and Urology, Linear Transducer for Peripheral vessels and small parts and sector transducer for Cardiac applications.

All the surplus funds after purchase of the scanner is being held in the charity accounts to be allocated to appropriate projects associated with the use of the scanner within GMH.



## **Green Memorial Hospital Governing Council**

Email ; [Surgerygmh@gmail.com](mailto:Surgerygmh@gmail.com)

Ms Nilogini Selvaratnam Board Secretary

Website : [www.greenmemorialhospital.com](http://www.greenmemorialhospital.com)

Telephone

UK: 00447449702287 ( Catherine Buer, Secretary to Patron)

Sri Lanka : 0094766559363 ( Nilogini Selvaratnam, Board Secretary )

Patron : Professor Jayantha Arnold

Chairman of Governing Council : Right Rev V. Pathmathyalan, Bishop of the Jaffna Diocese of Church of South India ( JDCSI )

Medical Director and Governor : Prof Surenthirakumaran , Dean of the Faculty of Medicine Jaffna.

Clinical Director and Governor : Dr Kumaran Consultant in Family Medicine and Senior Lecturer, Medical Faculty, University of Jaffna

Academic Director and Governor : Dr Coonghe Senior lecturer in Public Health, Medical Faculty, University of Jaffna.

Clinical Director and Governor : Dr Premakrishna Senior Consultant Anaesthetist and Senior Lecturer in Physiology, Medical Faculty, University of Jaffna

Clinical Director and Governor : Dr Mathivaanan, Consultant General Surgeon, Jaffna Teaching Hospital.

Governor : Dr Kandeepan Consultant Orthopaedic Surgeon.

JDCSI Secretary and Governor ; Rev Sathees Daniel

JDCSI Treasurer and Governor : Mr Joe Inbaraj

Trustees of Friends of Manipay Hospital Registered Charity are

Dr George Mather  
Mr Anandan Arnold  
Dr Deva Vishva  
Prof Jayantha Arnold

Friends of Manipay Hospital

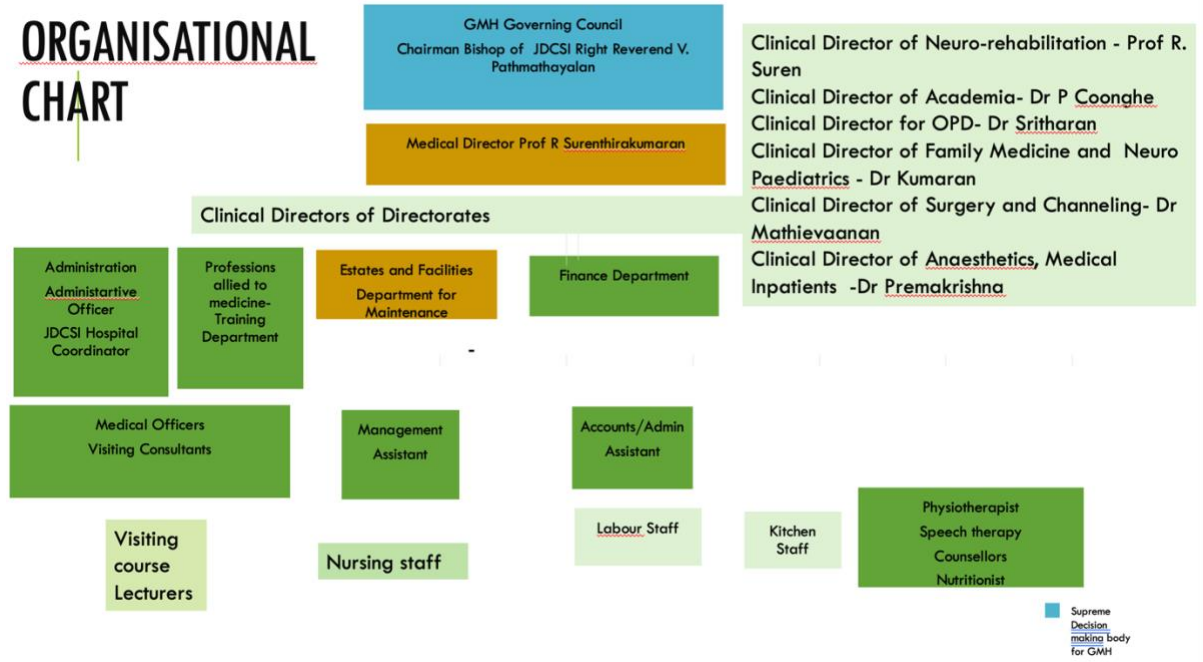
1 BEAUCHAMP COURT  
VICTORS WAY  
BARNET  
HERTFORDSHIRE  
EN5 5TZ

All audited accounts of FOMH are available at [www.greenmemorialhospital.com](http://www.greenmemorialhospital.com)

Auditors :

ACE Accountants and Tax Consultants  
127 Fencepiece Road, Ilford IG5 2LD

# ORGANISATIONAL CHART







# GREEN MEMORIAL HOSPITAL

## கிறீன் மெமோரியல் வைத்தியசாலை

### OUR SERVICES எமது சேவைகள்

← 24 மணி நேர வெளி நோயாளர் பிரிவு சேவை  
( 24 hours OPD Service )

← 24 மணி நேர அவசர சிகிச்சைப் பிரிவு  
( 24 hours Emergency Unit )

← உள்ளக நோயாளர் விருதி சேவை  
( Inward Patient Service )

← ஆரம்ப புற்றுநோய் கண்டறிதல் மையம்  
( Cancer early detection center )

← ஸ்கானிங்  
( Scanning )

← கதிரியாக்க சேவை  
( X-Ray )

← நோயாளர் காவு வண்டி சேவை  
( Ambulance Service )

← விசேட வைத்திய ஆலோசனை சேவை  
( Consultation Service )

← இயன்முறை சிகிச்சை சேவை  
( Physiotherapy Service )

← ஆய்வுகூட சேவை  
( Laboratory Service )

021 225 5157 / 074 345 5158

May 1 st 2012 to May  
1st 2024

Green Memorial Hospital  
Contributions rounded to nearest round number

Manithaneyam Trust UK	60,000.00
Sathyarupa Charitable Trust USA	35,000.00
Jayantha arnold	100,000.00
Anandan arnold	18,000.00
Deva Vishva	15,000.00
Selvan Mather and Renuka and Shanthi DeSilva and family	15,000.00
Naren Bartlett	10,000.00
Suri Bartlett	1,000.00
Raji Bartlett	1,200.00
VJ Kumaran	1,100.00
Soosai Kumar	1,000.00
Mahesh Nirmalan	1,000.00
Pami Ratnavel	5,000.00
Saratha Natkunarajah	1,000.00
Janaki Pervarayar	1,000.00
Mr Prasher	500.00
Rohan Arnold	500.00
Chrisantha Arnold	1,000.00
Late Joel Arnold	2,000.00
Ealing Amman Temple, London	2,500.00
Noel Arnold	750.00
Brian Arnold	1,000.00
Shivanthhi Arnold	500.00
Mrs Fernanado	2,500.00
Caterina Sella	100.00
Prakash	100.00
Arunan Sivapatham	100.00
Nalayani Fernanado	2,500.00
Waterloo Foundation	10,000.00
Indu Sikumar	500.00
N Paramakumar	1,000.00
Vijay Thruvengadachari	1,100.00
Nirmalans	2,500.00
Sinnathamby	500.00
Ravin Selvadurai	3,000.00

Ursula Selvadurai	500.00
Maheshwaran Thangarajah	500.00
Thuushaara	50.00
Dan Rajasuriar	1,000.00
Tony Lewis	1,000.00
Jey Rasiah	100.00
Hiran Selvadurai	2,000.00
Yaso Mankckarajah	500.00
MIOT	10,000.00
Sherene Joseph	100.00
Cilian and Siobha	100.00
Nishkala Thiru	100.00
CAF	1,000.00
Karunaikumar	100.00
Man and Co	500.00
Rohini Ranjithkumar	100.00
Jeevi Daniel	2,500.00
Rajeswaran	100.00
Dilip Kuddithmaby	100.00
Pradeep Kuddithmaby	100.00
Kumar kuddithamby	100.00
Ravi Kuddithamby	100.00
Vipulanandan	100.00
Thayaparan	100.00
Paramalingam	500.00
Rotary Club Walsall	1,000.00
Yogan	100.00
Marina Wegorek	500.00
Barker XL Club	500.00
Roshan Perera	100.00
Methodist Church Letchworth	500.00
Coconut Merchant	500.00
Ndarajah Gowripalan	500.00
Packiarajah	50.00
Jeyaranjan	50.00
Sethukavalar	50.00
Suvendrani Balakrishnana	100.00
Sri Karunanithy	100.00
D Ravindran	50.00
Yasotharan	50.00
Wijit Sinniah	50.00
Rajan Waswani	2,000.00
Panch	1,000.00

Bo Mills	2,000.00
Narendran	500.00
Sarojini Joseph	2,500.00
Australian Medical Aid	2,500.00
Guna Ponnudurai	8,000.00
Mrs Suriyakumaran	12,500.00
SL Government for paramedical training	30,000.00
FOMH-Ride4ceylon	275,000.00
FOMH-Ridersforcharity	43,000
Patients and relatives contributing to care	600,000.00
SriLanka Association UK	2,500.00
Yarl Cricket club	1,000.00
Manipay Hindu College old students Canada	1,000.00
Ruki Mather Canada	2,666.00

Team GB for FOMH-rideforceylon included in FOMH-ride4ceylon 76,790.00

Team GB below

Sivasharma  
SivathasanSharma  
Than Prabakar  
Nirujan Raj  
Sivarajah and Bobby  
Than Shankar  
Jag Ghumman  
Logan Thurai  
Abarna  
Banu  
Cinthu  
Nicy  
Sangeetha  
Varsha  
Theepan & Thanu Pratheepan  
Kanan Gowtham  
Ewan Mcleod  
Paven  
Krishnamuthi Thavarajah  
Saagara Palliyage  
Vaheesan Maheswaran  
Dharshi Dewhurst

Dr Subothini Sinnathamby	2500
Mr Umang Patel	2500
WLPMS	5000
Anandkrishnan Kailash	2500

**GREEN MEMORIAL HOSPITAL, MANIPAL**

**QUALITY CERTIFICATION**

1. Item : Supply of Fully Digital Ultrasound System
2. Supplier : Mediquioment Ltd
3. Invoice No & Date : SI -17436
4. Quantity : 01 No
5. Value - Price without VAT : Rs.10,268,221.00

Total Price with VAT: Rs.12,116,000.00

6. Model & Brand : Canon Medical Corporation  
Canon Xario-100 GO
7. Serial No of the Machine : WBC23Y2948
8. Specification : Attached

**Certification**

This is to certify that the above item/items has /have been checked by me and agree/ agrees with the specification as per the above order and the items delivered are fully acceptable.

Name : *G. Rajanna - Bmr*

Signature:  
Date :

*h. Rajanna*



The Ultrasound scanner was blessed by JDCSI Bishop on 27<sup>th</sup> July 2024 and the first patient had a scan done by the Consultant Radiologist.

# R4C 2024 Income & Expenditure Summary

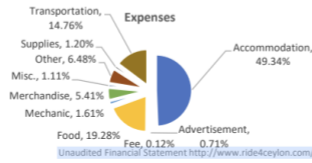


February 27<sup>th</sup> to March 2<sup>nd</sup>, 2024

Income & Expenses at Bank Country & Currency			
	Australia AUD	United Kingdom GBP	Sri Lanka LKR
<b>Income</b>			
Interest			579,780.63
Sponsorship	17,300.00	97,552.94	2,977,204.35
<b>Income Total</b>	<b>17,300.00</b>	<b>97,552.94</b>	<b>3,556,984.98</b>
<b>Expenses</b>			
Accommodation		7,044.60	3,717,384.52
Advertisement			92,225.00
Fee			15,159.88
Food			2,518,315.83
Mechanic			210,000.00
Merchandise			707,000.00
Misc.			145,100.00
Other		2,135.98	19,000.00
Supplies			157,110.00
Transportation			1,928,164.00
<b>Expenses Total</b>	<b>-</b>	<b>9,180.58</b>	<b>9,509,459.23</b>
<b>Net</b>	<b>17,300.00</b>	<b>88,372.36</b>	<b>(5,952,474.25)</b>



Combined Income & Expenses by Currency					
Currency	AUD	CAD	GBP	LKR	USD
<b>Income by Currency</b>					
Interest	2,960.18	2,615.51	1,497.10	579,780.63	1,811.81
Sponsorship	208,090.57	183,861.69	105,240.84	40,756,619.75	127,364.44
<b>Income Total</b>	<b>211,050.75</b>	<b>186,477.20</b>	<b>106,737.94</b>	<b>41,336,400.38</b>	<b>129,176.25</b>
<b>Expenses</b>					
Accommodation	32,908.95	29,077.22	16,643.55	6,445,546.76	20,142.33
Advertisement	470.87	416.05	238.14	92,225.00	288.20
Fee	77.40	68.39	39.15	15,159.88	47.37
Food	12,857.73	11,360.65	6,502.74	2,518,315.83	7,869.74
Mechanic	1,072.19	947.35	542.26	210,000.00	656.25
Merchandise	3,609.72	3,189.43	1,825.60	707,000.00	2,209.38
Misc.	740.84	654.58	374.67	145,100.00	453.44
Other	4,320.44	3,817.39	2,185.04	846,200.97	2,644.38
Supplies	802.15	708.76	405.69	157,110.00	490.97
Transportation	9,844.60	8,698.35	4,978.86	1,928,164.00	6,025.51
<b>Expenses Total</b>	<b>66,704.90</b>	<b>58,938.16</b>	<b>33,735.69</b>	<b>13,064,822.45</b>	<b>40,827.57</b>
<b>Net</b>	<b>144,345.85</b>	<b>127,539.04</b>	<b>73,002.24</b>	<b>28,271,577.94</b>	<b>88,348.68</b>



Date	From	To	Distance(Km)
February 28 <sup>th</sup>	Kandy	Dambulla	98
February 29 <sup>th</sup>	Dambulla	Dambulla	119
March 1 <sup>st</sup>	Dambulla	Vavuniya	116
March 2 <sup>nd</sup>	Vavuniya	Manipay	150
<b>Total</b>			<b>483</b>



Riders By Country	
Australia	11
Canada	2
India	2
Singapore	1
Sri Lanka	13
United Kingdom	19
United States	4
<b>Total</b>	<b>52</b>
Support Staff	
Ambulance	2
Doctor	2
Drivers	10
Helpers	2
Logistics	6
Mechanics & Support	4
Photographer	1
Physio	1
Police	6
<b>Total</b>	<b>34</b>
Transportation	
Ambulance	1
BackUp Vehicles	8
Bike Carrier	2
Police Bikes	3
Shuttle	1
<b>Total</b>	<b>15</b>

Unaudited Financial Statement <http://www.ride4ceylon.com/>